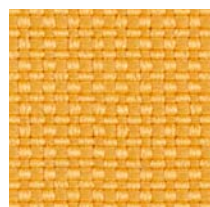


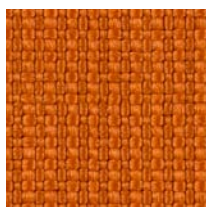
# SM | Sempre

1

PRICE GROUP | PREISGRUPPE | GROUPE DE PRIX



SM11



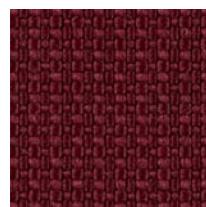
SM10



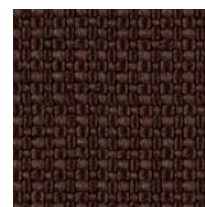
SM09



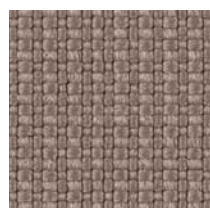
SM06



SM05



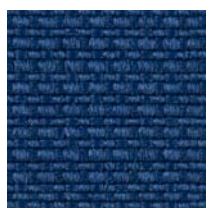
SM05



SM04



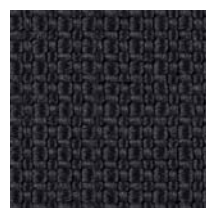
SM08



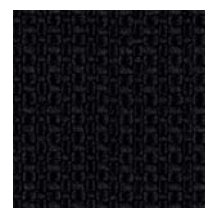
SM07



SM03



SM02



SM01

**Composition:**

100% polyester

**Weight:**

366 g/m<sup>2</sup>

**Abrasion Resistance:**

160 000 Martindale cycles

**Flammability:**

EN 1021 1&2 (cigarette & match)

**Other:**

hygienic certificate by National Hygiene Institute in Poland

**Material:**

100% Polyester

**Gewicht:**

366 g/m<sup>2</sup>

**Scheuerfestigkeit:**

160 000 Touren Martindale

**Brandschutznormen:**

EN 1021 1&2 (Zigaretten & Streichholz)

**Sonstiges:**

Hygiene-Zertifikat des Nationalen Hygieneinstituts in Polen

**Composition :**

100% polyester

**Poids :**

366 g/m<sup>2</sup>

**Résistance à l'abrasion :**

160 000 Cycles Martindales

**Résistance au feu :**

EN 1021 1&2 (cigarette et allumette)

**Autres :**

Attestation Hygiénique de l'Institut National d'Hygiène en Pologne"

Nowy Styl Group reserves the rights to change the upholsteries of products. Information about finishes applicable to each product can be found in pricelists.

Weitere Informationen zu den Oberflächen /Stoffen finden Sie in den Preislisten. Nowy Styl Group behält sich das Recht vor, Designänderungen und Änderungen in den Stoffen und Oberflächen vorzunehmen.

Pour plus d'informations sur les finitions disponibles pour chaque produit, se reporter aux Tarifs Publics. Nowy Styl Group se réserve le droit de modifier les finitions de ses produits.